

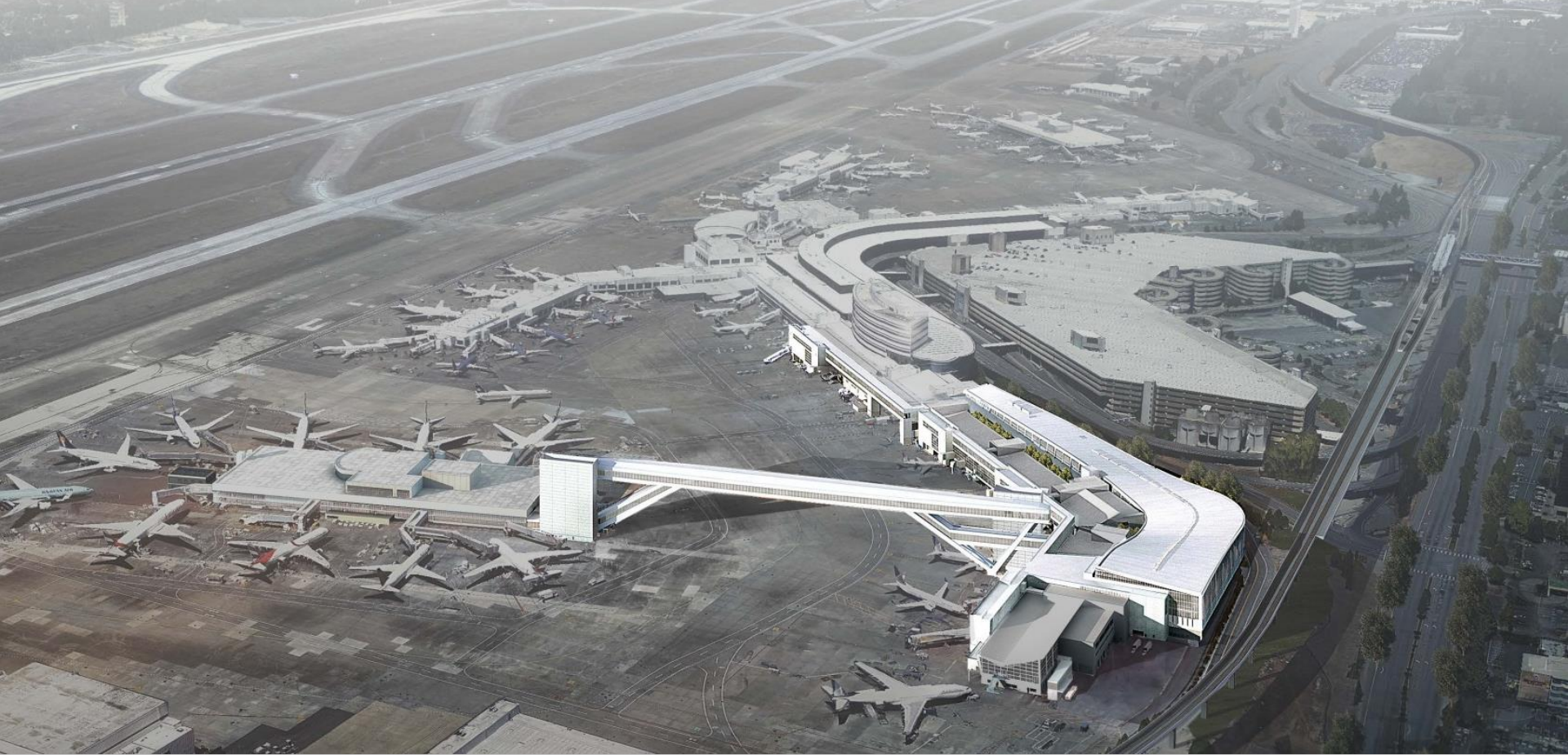
Item No. 6a supp

Date of Meeting March 28, 2017

Revised March 27, 2017

Seattle-Tacoma International Airport International Arrivals Facility (IAF)

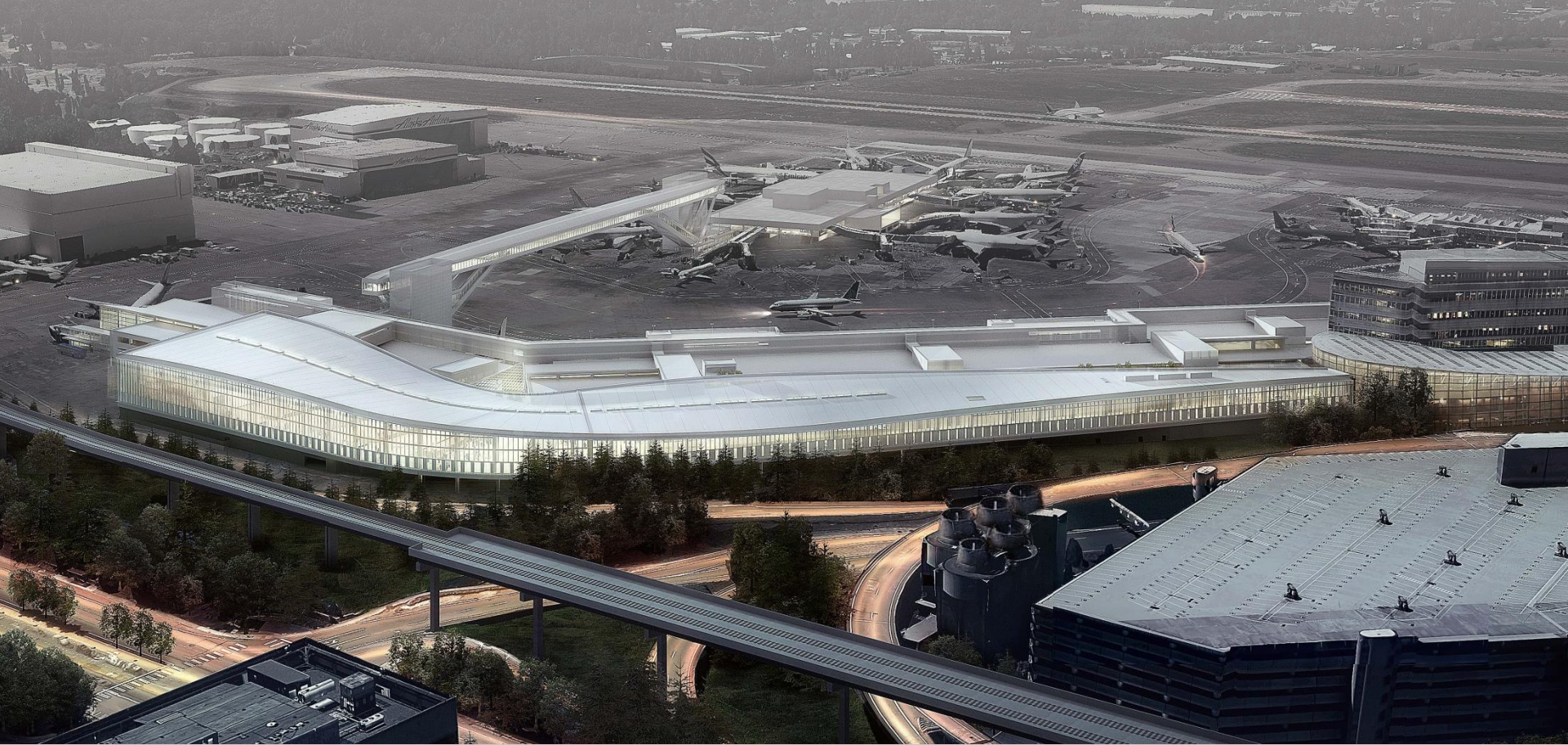
Incremental Project
Funding



Aerial View



Interior at Baggage Claim



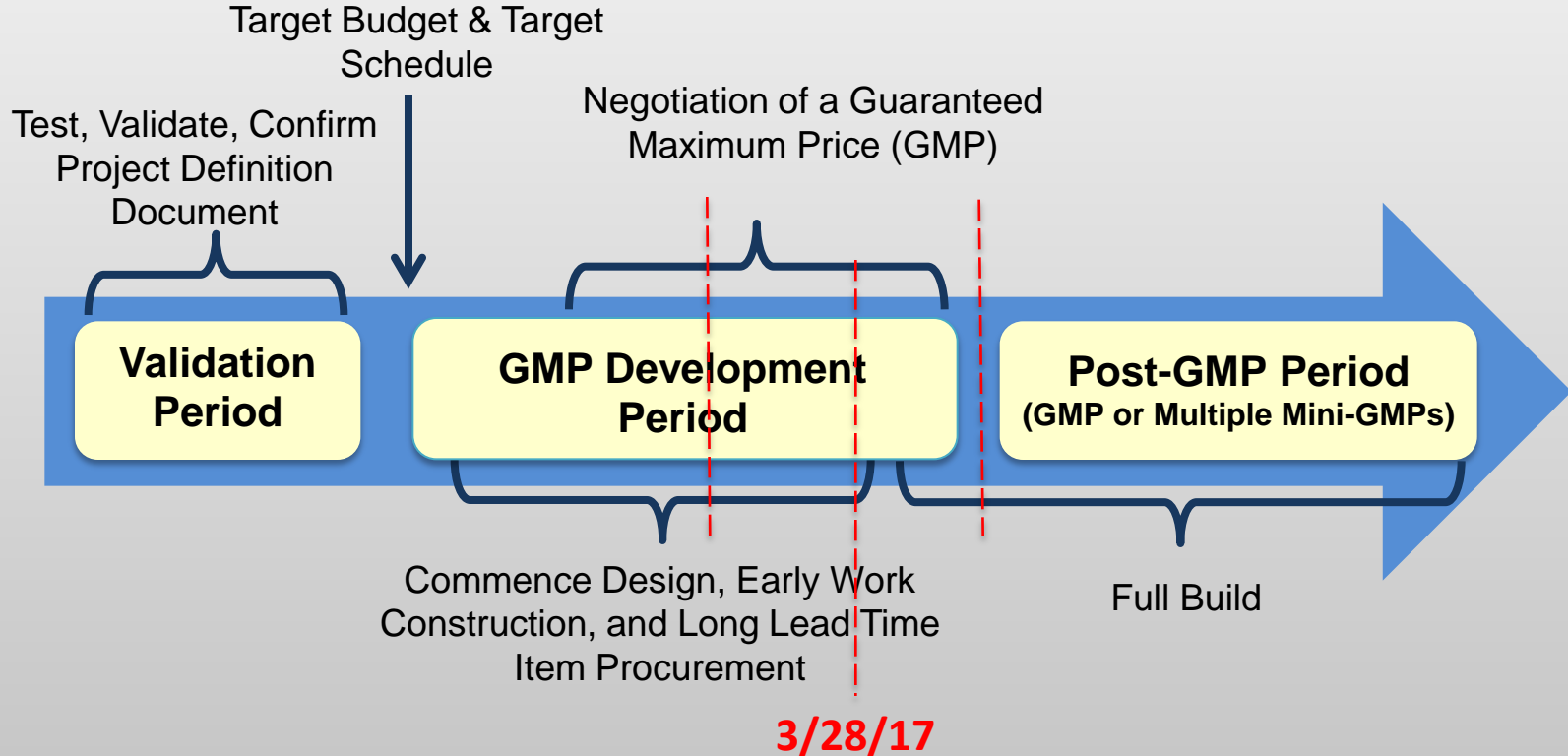
IAF at Night

Project Briefing

- Design-Build Contract Status
- Key Project Initiatives:
 - Maintain Budget and Schedule
 - Establish the Right Scope
 - Community Participation (Small Business)
 - Environmental (Sustainability)
- Additional **Incremental** Project Funding and Extension of Current Contract Phase Required

Scope, Schedule, Budget

Design-Build Contract Status



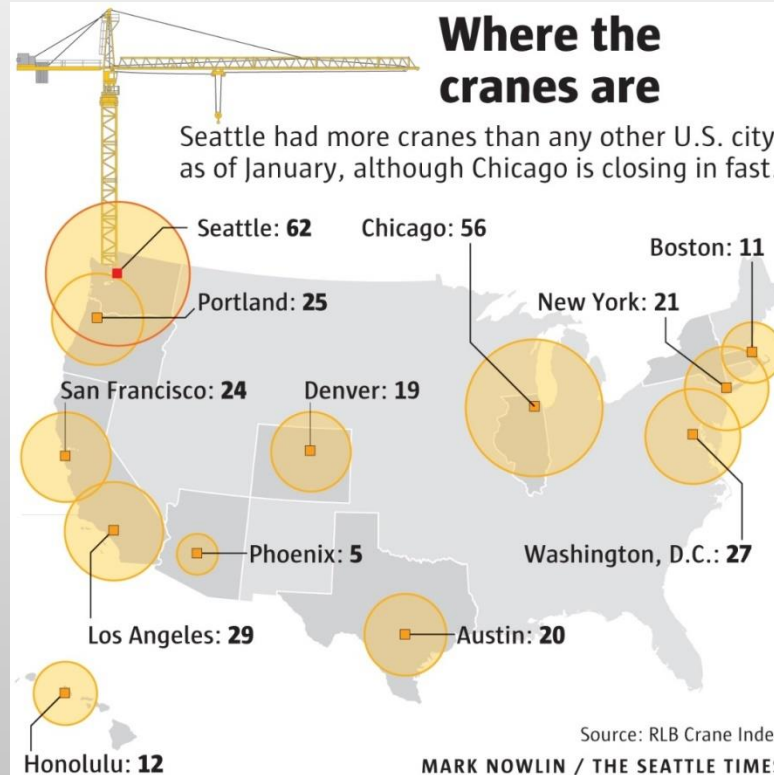
GMP Now Targeted for September

Design-Build Contract Status

1	OPERATIONAL: Process 2,600 international passengers per hour	✓
2	ENVIRONMENTAL: Achieve LEED v4 Silver	✓
3	DESIGN EXCELLENCE: An iconic design with a Northwest Sense of Place	✓
4	ACHIEVE TARGET SCHEDULE: September 2019	✓
5	DESIGN TO THE TARGET BUDGET:	?

Budget Risk Due to Increasingly Tight Construction Market

Tight Construction Market



Tight Market Leads to Higher Price Risk

The Right IAF Project Scope



Planning & Programming
Document (PPD)



Program Definition
Document (PDD)



Basis of Design (BoD)



Scope and Design Coordinated with Port, Airline and Federal Stakeholders

IAF Budget

IAF PROJECT

\$608.4M – Base Budget

\$ 41.0M – Phase 2 Sterile Corridor Extension

\$ 11.0M – Phase 2 Balance of Scope Acceleration

\$660.4M – Revised Budget

OTHER CAPITAL PROJECTS

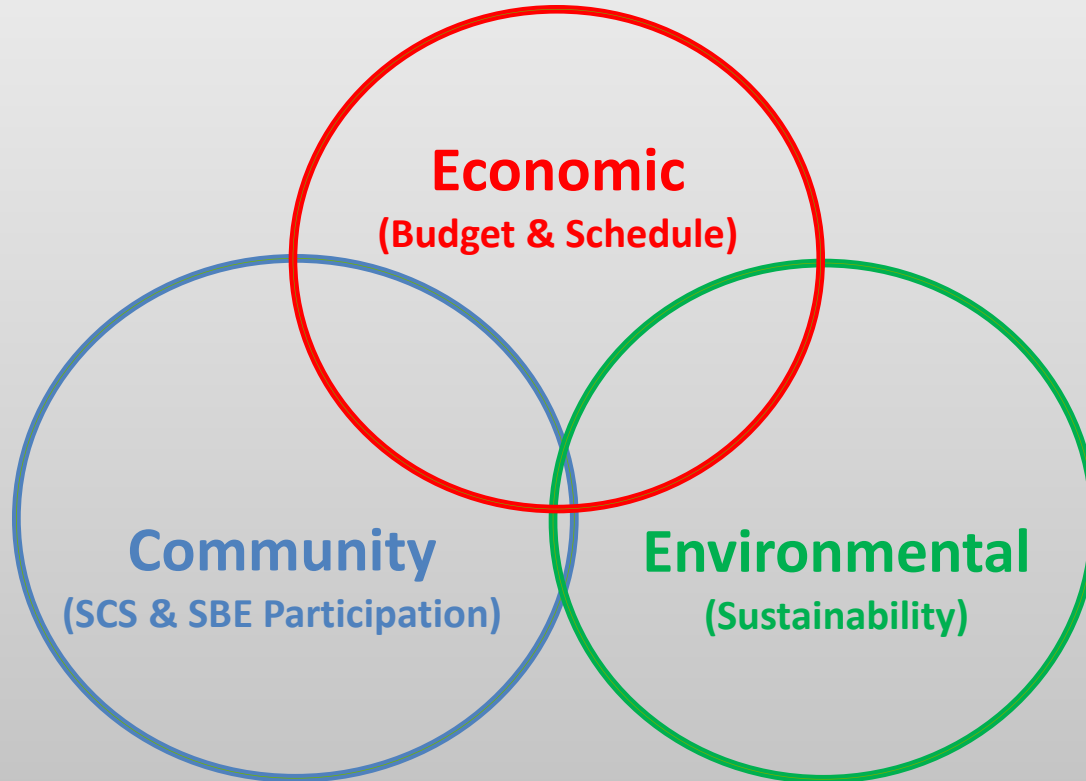
\$660.4M – Revised Budget

\$ 5.5M – Narrow Body Optimization at SSAT

\$ 18.5M – Baggage Optimization Below IAF

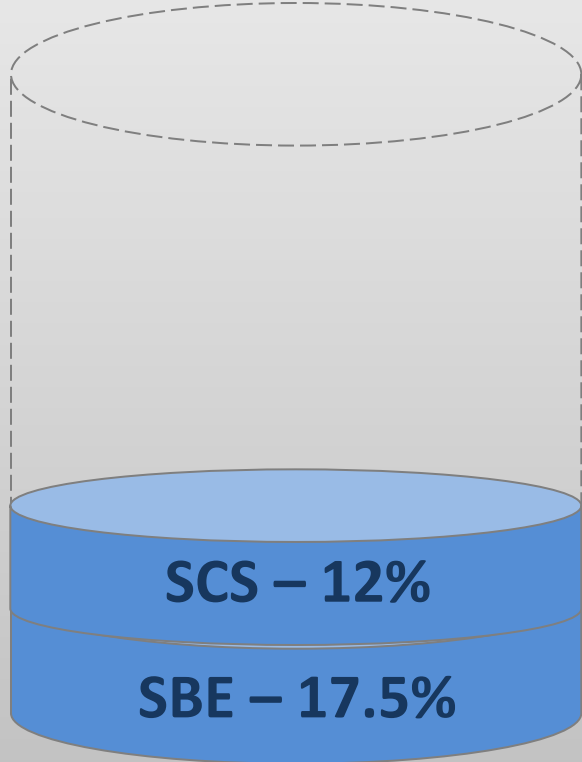
\$684.4M – Total IAF + Other

IAF's Triple Bottom Line

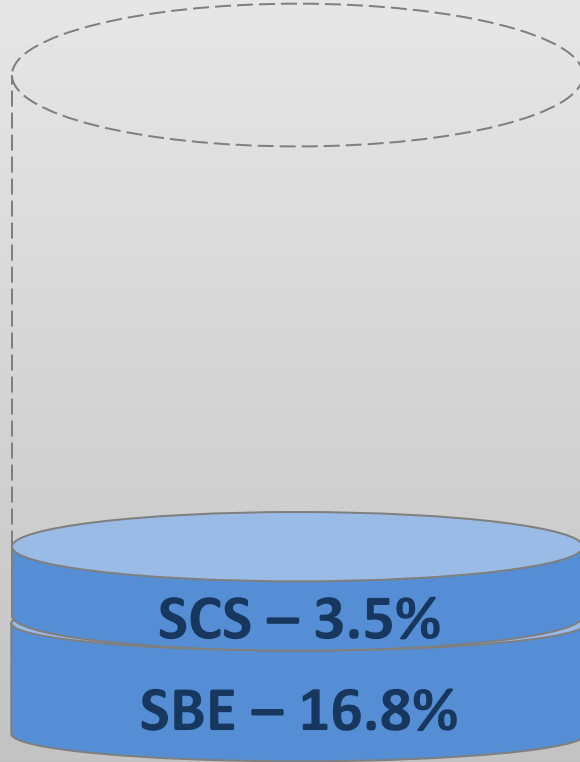


Community Participation

Planned



Contracted to Date



Total Contract



Community Participation

Contractor	SCS	SBE
Macro-Z Technology Co - Concourse Renovations and GT Lot Work	0%	100%
MACNAK Construction LLC - Maki Sculpture Relocation	0%	100%
TEKNON Electrical Services - Low Voltage Systems	0%	100%
Canron – Structural Steel & Metal Decks (Design-Assist)	0.18%	3%
Crown Corr – Building Enclosure (Design-Assist)	4%	2.26%
Kone – Elevators, Escalators & Moving Walkways (Design-Assist)	0.11%	3.34%
Apollo/PAE – Mechanical/Plumbing (Design-Build)	10%	100%
Cosco – Fire Protection (Design-Build)	0%	2.26%
Valley Electric/Stantec – Electrical (Design-Build)	20%	25%
Diversified Conveyor – Baggage Handling System (Design/Build)	5.41%	100%
Aero Systems Engineering - Passenger Loading Bridges	0%	100%
Gary Merlino Construction - AOA Paving/Fueling Systems	0%	8%
Krueger Sheet Metal - Roofing/Waterproofing	0%	8%

Environmental Features of the IAF Project

Water Efficiency:

- Rainwater Management - Installing double pipe for future rainwater system.

Energy Use Reduction:

- LED lighting and high efficiency motors in baggage system.
- Harnessing daylighting with the use of daylight sensors to reduce energy.
- Efficient central airport plant for heating and cooling.

Environmentally Friendly Materials:

- Locally based and low impact to the extent possible.

Enhanced Commissioning:

- Independent Commissioning Agent.

Targeting LEED Silver



IAF is First Port Facility to Pursue LEED v4

Commission Action Request

- Authorize Additional Incremental IAF Project Funding of \$130M
- Authorize Extension of Current Contract Phase to September 30, 2017
- Authorize the CEO to execute contracts, amendments and change orders as required to keep IAF project on schedule using increased project funding to \$482M
- Staff plans to return in September with a Proposed Guaranteed Maximum Price and a request for the balance of the project budget

Sustains Design, Procurement and Construction